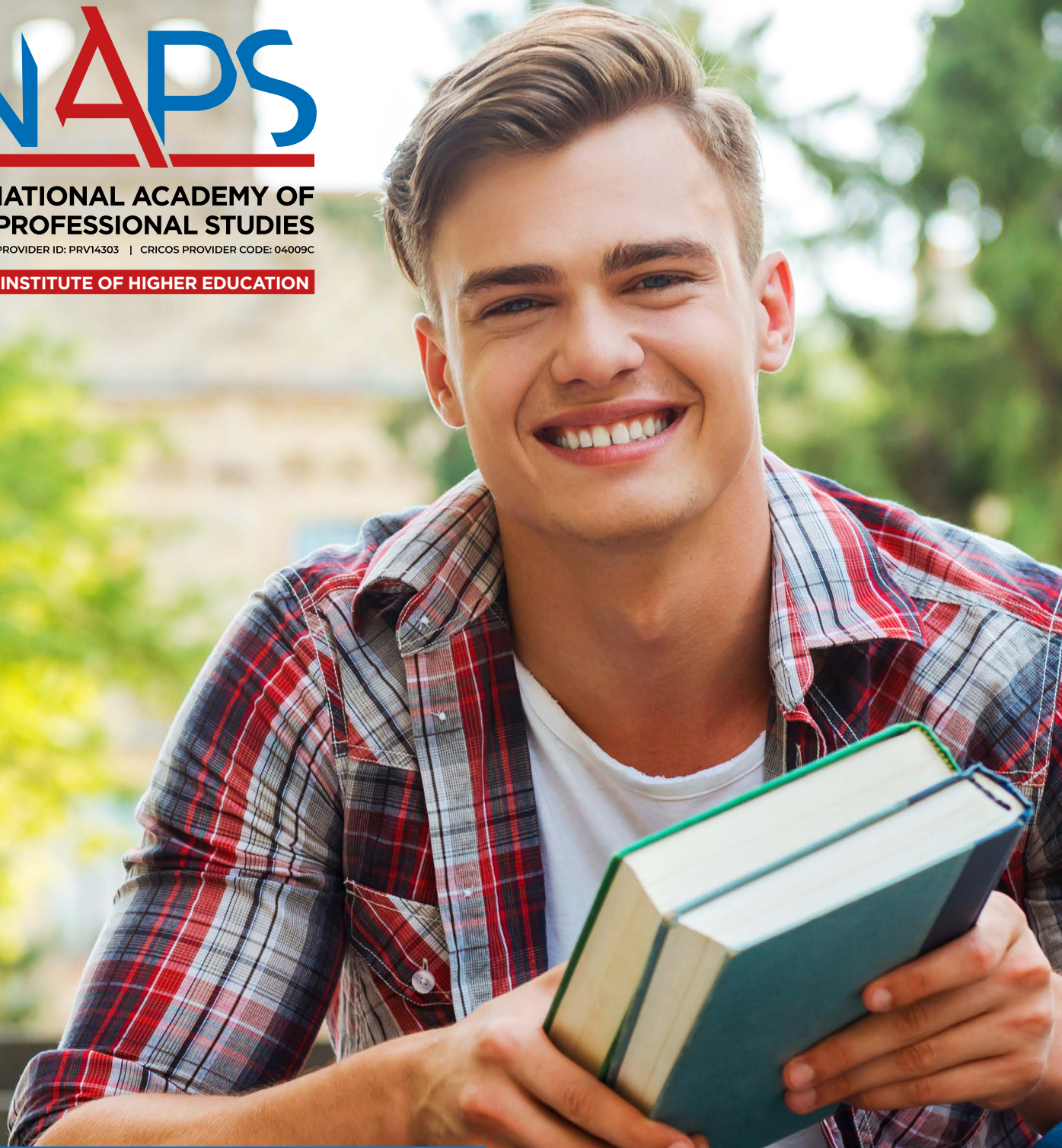




**NATIONAL ACADEMY OF
PROFESSIONAL STUDIES**

PROVIDER ID: PRV14303 | CRICOS PROVIDER CODE: 04009C

INSTITUTE OF HIGHER EDUCATION

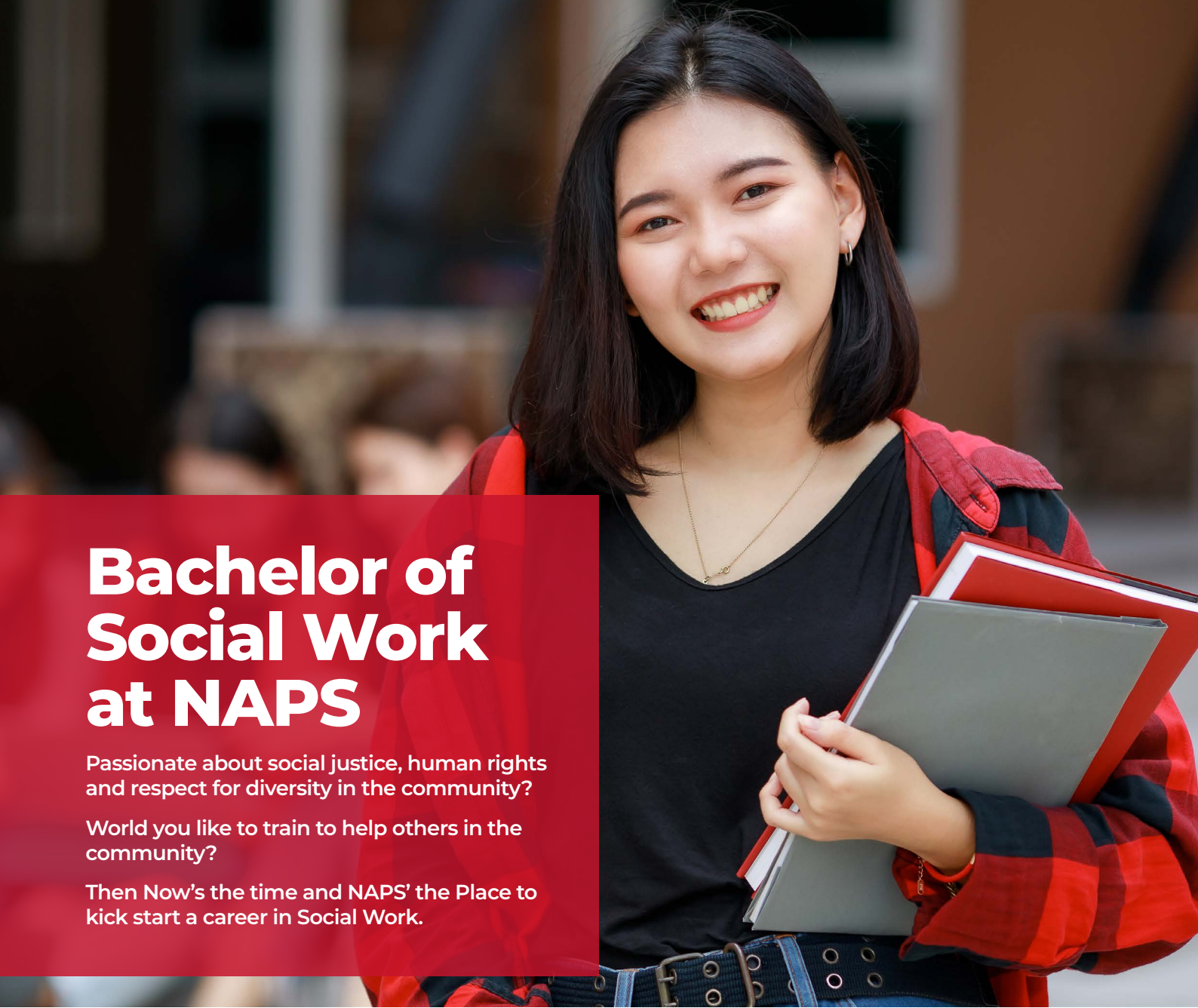


Bachelor of Social Work*

CRICOS Course Code: 116109A

Duration: 208 Weeks

*Enrolment is subject to accreditation from AASW & TEQSA approval



Bachelor of Social Work at NAPS

Passionate about social justice, human rights and respect for diversity in the community?

World you like to train to help others in the community?

Then Now's the time and NAPS' the Place to kick start a career in Social Work.

Why BSW @ NAPS?

- The opportunity to major in popular specialist areas in high demand
- Study in Sydney
- Convenient location in the Sydney CBD
- High value degree opening many possibilities
- Small class sizes
- Highest professional standards
- Enhanced work opportunities
- Recognised prior learning available

BSW @ NAPS

Your Course, Your Choices

- **4 years full time** over **8 semesters** with the option to take summer trimesters for shorter course duration
- **27 core units plus 1 elective** of your choice for specialisation
- **Part-time study** options for domestic students
- Choose your intake period for admission:
March, July or November

Trimester 1 / Trimester 2 / Trimester 3 (Optional)

CORE UNITS

Unit Code	Unit Name
STS101	Understanding Society
STS102	Context of Human Services
STS103	The Individual in Society
MGT 101	Principles of Professional Communication
STS105	Lifespan Development and the Human Services
STS106	Community and Social Action
STS107	Community Work and Development
STS108	Social Policy
STS209	Working with Communities
STS210	Human Services Intervention Strategies
STS211	Law and Social Work
STS212	Working in Multi-Cultural Contexts
STS213	Social Research Methods
STS214	Mental Health in the Community
STS215	Working with Individuals and Families
STS216	Social Work with Indigenous Communities
STS316	Contemporary Issues in Social Work
STS317	Child Abuse as a Social Issue
STS318	Ethics in Social Work
STS319	Dealing with Family Violence: Policy and Practice
STS321	Social Work and Health
STS322	Field Education 1
STS423	Group Work in Social Work
STS425	Critical Practice in Social Work
STS426	Ideologies of Practice in Social Work
STS429	Field Work 2
STS427	Innovation, Creativity and Social Roles in Healthy Ageing

ELECTIVE UNITS

Unit Code	Unit Name
STS332	Applied Social Research
ITS303	User Experience
LAW305	Mental Health Law
ITS201	Introduction to Computer System
STS406	Gerontology
STS424	Community Management and Organisations
STS428	Contemporary Social Work Practice
LAW407	Refugee Law and Practice
LAW408	Human Rights Law

Course Structure

The standard progression for the course comprises two trimesters per academic year. However, the Academy may offer an optional Summer Trimester and bring the total number of sessions in a year to 3 trimesters. This would allow a student who fails units in the standard 2 trimesters to repeat the units when offered in the Summer Trimester. While the summer terms may be shorter than the standard trimesters, the volume of learning required would be the same as the standard term. Depending on units offered, new students may also enrol in the Academy in the Summer Term.

Students are required to successfully complete units in each trimester before progressing to the next trimester of study unless there are exceptional circumstances as determined by the Student Progress Committee (SPC).

Table 6: Sample Typical 4-Year Progression

Unit Code	Trimester 1	Unit Code	Trimester 2
STS101	Understanding Society	STS105	Lifespan Development and the Human Services
STS102	Context of Human Services	STS106	Community and Social Action
STS103	The Individual in Society	STS107	Community Work and Development
STS104	Ethics in Social Work	STS108	Social Policy

Total Credits Point in Year 1: 80

Unit Code	Trimester 3	Unit Code	Trimester 4
STS209	Working with Communities	STS213	Social Research Methods
STS210	Human Services Intervention Strategies	STS214	Mental Health in the Community
STS211	Law and Social Work	STS215	Working with Individuals and Families
STS212	Working in Multi-Cultural Contexts	STS216	Social Work with Indigenous Communities

Total Credits Points in Year 2: 80

Unit Code	Trimester 5	Unit Code	Trimester 6
STS316	Contemporary Issues in Social Work	STS320	Field Education 1 (30cp)
STS317	Child Abuse as a Social Issue	STS321	Social Work and Health
STS318	Ethics in Social Work		
STS 319	Dealing with Family Violence: Policy and Practice		
xxxx	Elective		

1 elective unit to be chosen from the following

Unit Code	Elective Unit
ITS315	Human Computer Interactions
STS323	Applied Social Research
LAW305	Mental Health Law (pre STS211 Law and Social Work)
ITS322	Introduction to Information Systems

Total Credits Points in Year 3: 80

Unit Code	Trimester 7	Unit Code	Trimester 8
STS423	Group Work in Social Work	STS427	Innovation, Creativity and Social Roles in Healthy Ageing
XXXX	Elective	STS429	Field Education 2 (30cp)
STS425	Critical Practice in Social Work		
STS426	Ideologies of Practice in Social Work		

1 elective unit to be chosen from the following

Unit Code	Elective Unit
STS406	Gerontology
STS424	Community Management and Organisations
STS428	Contemporary Social Work Practice
LAW407	Refugee Law and Practice
LAW408	Human Rights Law

Total Credits Points in Year 4: 80

Admissions Requirements

All students must have been formally admitted to the Academy before commencing their degree program. Admission to the course is based upon the ATAR and NAPS' Admissions Policy. To be admitted to the degree program, a student must meet the following criteria:

Domestic Students: Current School Leavers

Minimum ATAR of 65 (or equivalent assessment in New Zealand or the Overall Position (OP) in Queensland) or a Higher School Certificate or overseas equivalent.

Non-Current School Leavers

- Completion of a AQF level 4 or equivalent course; or
- Previous admission to or the subsequent completion of at least one trimester of an AQF level 7 or equivalent course.

Students with Disabilities

The same conditions and procedures apply to the admissions of students with a disability as to all other students, however NAPS fosters an environment of inclusiveness so special measures are provided to support their learning when required and discussed as part of the admission process.

Mature Age Applicants

A student who does not meet the standard 'school leavers' criteria may apply for admission as a mature age applicant if they:

- are 21 years of age or older on 1st March of the year they intend to commence study; do not have the required ATAR for admission to the course;
- do not have a record of tertiary study; and have completed an approved preparation course of not less than 6 months duration; or
- have completed a vocational training course and have been assessed by the Dean or nominee to be able to undertake tertiary studies.

Aboriginal and Torres Strait Islander students

NAPS is committed to equity of access, & supports alternative entry admission schemes particularly for Aboriginal & Torres Strait Island students who are encouraged to apply. The Academic Board may approve such admissions to:

- encourage and assist indigenous students to enrol into studies; or
- provide access to the educationally or socially disadvantaged; or
- address the under-representation of designated groups.

Articulation Arrangements and RPL

Students who have completed a diploma or advanced diploma or equivalent course in another approved institution may transfer into this degree. The amount of credit transfer or recognition of prior learning will be assessed for each individual student.

English Language Requirements

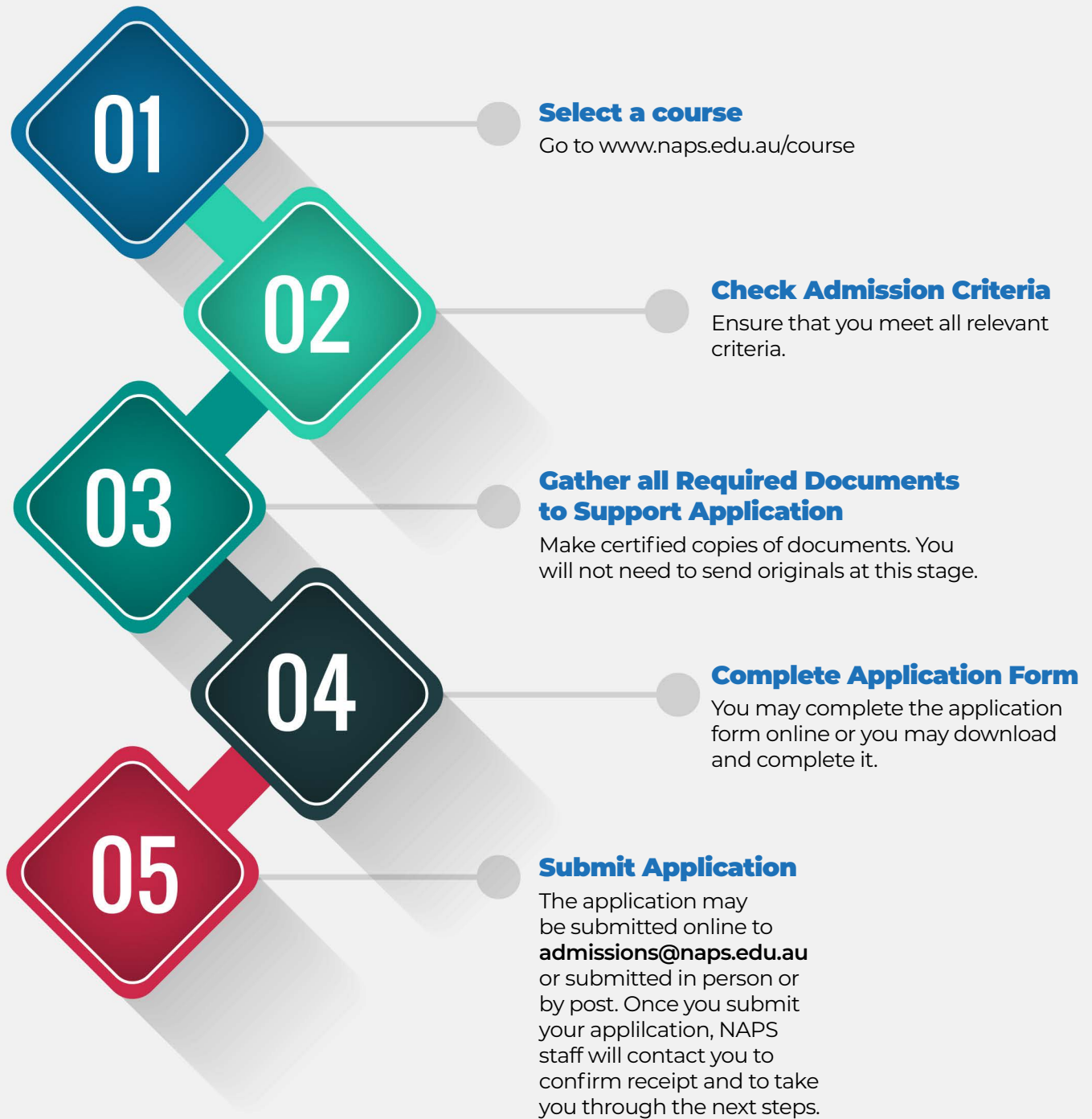
The medium of instruction in the Academy is English. All students are therefore required to demonstrate a minimum level of proficiency in the English language to qualify for admission.

The following criteria apply:

- Students from Australian local institutions must have completed a Higher School Certificate or equivalent from overseas.
- Mature students from English speaking countries must pass an English language proficiency interview conducted by the Dean or nominee.
- For students from non-English speaking countries who apply onshore or directly from their home countries, the condition of admission in accordance with Clauses 5.2.2 and 5.5.2 ASWEAS standards is a minimum IELTS score of 7.0 with each band no less than 7 or equivalent, in TOFEL or other accredited English language test program provided by an accredited supplier of such tests.
- Students who do not meet the minimum English Language requirement may be permitted to enrol after successful completion of an appropriate English for Academic Purposes program accredited by NEAS and approved by the Academy.

When an IELTS score or equivalent is used to demonstrate English proficiency, that score must have been attained within two years of the date of application for admission.

5 Easy Steps to Kick Start Your Studies



Fees and Charges

The tuition fee for the NAPS Bachelor of Social Work is \$9,500 for each trimester. There are three trimesters per year, including the optional summer trimester.

An application/enrolment fee of \$250 applies to enrolment in all courses in NAPS. This fee is non-refundable. NAPS also charges students \$240 per trimester for subscription to ebooks and materials. Therefore, before a confirmation of enrolment can be issued, all students need to pay \$9,870 which is their enrolment plus their first trimester of tuition fees and ebook and software subscription charges.

All students at NAPS must pay their fees in advance on a trimester by trimester basis at least two weeks before the start of the trimester. Students will receive written notices of their next fee due date about four weeks before the completion of the existing trimester.

If the tuition fee is not paid on time, then a late payment fee may apply as follows:

- More than 7 days overdue \$200
- More than 14 days overdue \$400

Should an international student's fees be more than 14 days overdue, NAPS will inform the student that NAPS' needs to report them for non-payment of fees to The Department of Home Affairs.

The payment of all fees and charges is receipted and dated at the time of payment. It is secured for two years after the student ceases to be a student and is kept within the financial management system software for up to five years.

Students can see the details of their payments made and any amounts owing on the student portal.

Schedule of Non-tuition (Administration) Fees

Application Fee (also known as Enrolment Fee)	\$250	Refund processing fee	\$250
Overdue tuition fee – 7 days	\$200	Cancellation and Course variation fee	\$150
Overdue tuition fee – 14 days	\$400	Transfers processing fee	\$250
Change of CoE details	\$100	Assessment re-sit or re-assessment	\$150
Re-enrolment fee	\$200	Replacement qualification testamur	\$100
Credit transfer fee per unit	\$50	Re-issue of record results	\$50
Deferral of initial enrolment	\$0	Deferral of continuing enrolment	\$0
Materials and ebook and software subscription per trimester	\$500		

Note that the fees quoted are for the current calendar year only. NAPS reviews its fees every year calendar year. NAPS may apply the revised fees in subsequent calendar years. The increase in fees for each calendar year will be no more than 5%



PROVIDER ID: PRV14303 | CRICOS PROVIDER CODE: 04009C

**NATIONAL
ACADEMY OF
PROFESSIONAL
STUDIES**

Level 4, 136 Chalmers Street Surry Hills
NSW 2010 Australia

02 8542 1753 | admissions@naps.edu.au

www.naps.edu.au | Follow us    

